

Reach Out (I'll Be There)

Transcription - Philip Mann

Artist: Four Tops
Bassist: James Jamerson

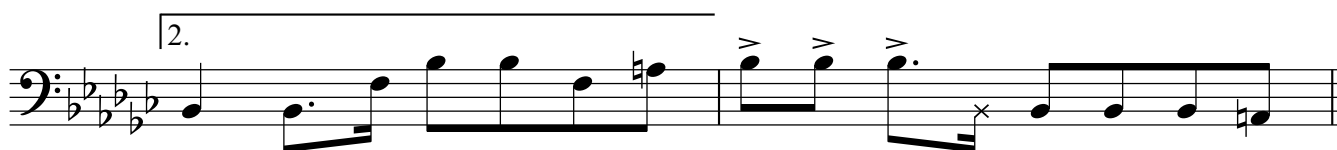
♩ = 120



A



B



C



D

1.

2.

Section D consists of four staves of music in bass clef, 6/8 time, with a key signature of three flats. The first staff includes a first ending bracket. The second staff includes a second ending bracket and three accents (>) over the notes. The third and fourth staves continue the melodic line.

E

Section E consists of four staves of music in bass clef, 6/8 time, with a key signature of three flats. The first two staves feature a rhythmic pattern of eighth notes with some rests. The third and fourth staves continue the pattern, with some notes marked with an 'x'.

F

Section F consists of two staves of music in bass clef, 6/8 time, with a key signature of three flats. The first staff includes a first ending bracket. The second staff concludes the section with the instruction "(Begins to fade...)" below it.