

UNDER THE BRIDGE

Artist: RHCP
Bassist: Flea

♩ = 68



8

A single bass staff with a whole rest for 8 measures. The key signature has three sharps (F#, C#, G#) and the time signature is 4/4.

♩ = 76

A Verse

8

A single bass staff with a whole rest for 8 measures. The key signature has three sharps (F#, C#, G#) and the time signature is 4/4.

1.

A bass staff with a melodic line for the first ending. It starts with a quarter rest, followed by quarter notes G#2, A2, B2, C3, and a half note D3. The key signature has three sharps (F#, C#, G#) and the time signature is 4/4.

2.

2

A bass staff with a whole rest for 2 measures. The key signature has three sharps (F#, C#, G#) and the time signature is 4/4.

B

A bass staff with a melodic line for section B. It starts with a quarter rest, followed by quarter notes G#2, A2, B2, C3, and a half note D3. The key signature has three sharps (F#, C#, G#) and the time signature is 4/4.

C

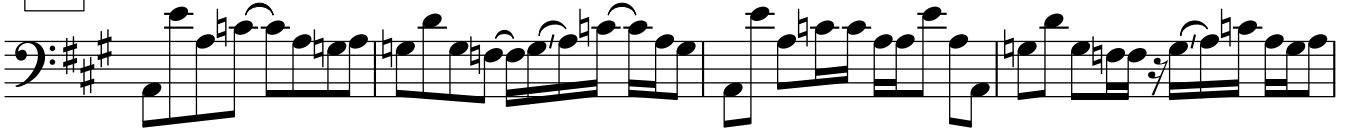
A bass staff with a melodic line for section C. It starts with a quarter rest, followed by quarter notes G#2, A2, B2, C3, and a half note D3. The key signature has three sharps (F#, C#, G#) and the time signature is 4/4.

D

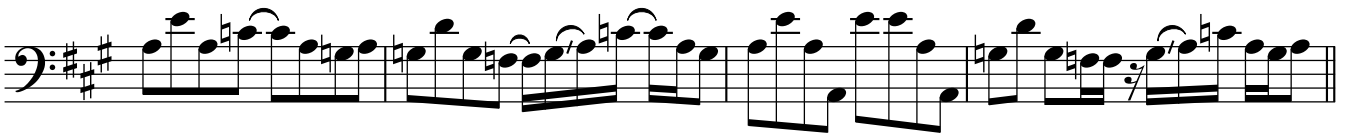
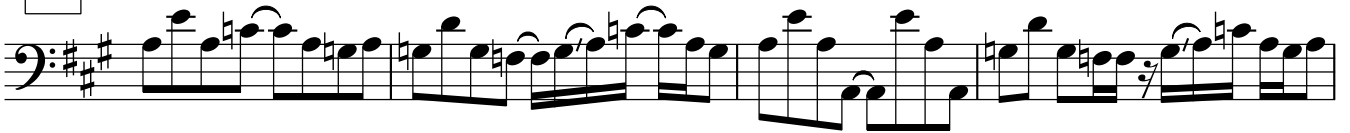
A bass staff with a melodic line for section D. It starts with a quarter rest, followed by quarter notes G#2, A2, B2, C3, and a half note D3. The key signature has three sharps (F#, C#, G#) and the time signature is 4/4.



D



E



F

