

# Good Vibrations

Transcription - Philip Mann

Artist: The Beach Boys  
Bassist: Carol Kaye

♩ = 154

The first measure of the bass line is in 4/4 time, starting with a muted guitar chord (indicated by a '7' above the staff). The notes are: G2 (quarter), A2 (quarter), B2 (quarter), C3 (quarter), D3 (quarter), E3 (quarter), F3 (quarter), G3 (quarter).

(Muted, with plectrum)

The second measure continues the bass line with notes: G3 (quarter), A3 (quarter), B3 (quarter), C4 (quarter), D4 (quarter), E4 (quarter), F4 (quarter), G4 (quarter).

1.

The third measure continues the bass line with notes: G4 (quarter), A4 (quarter), B4 (quarter), C5 (quarter), D5 (quarter), E5 (quarter), F5 (quarter), G5 (quarter).

2.

A

Section A consists of two measures of bass line with notes: G4 (quarter), A4 (quarter), B4 (quarter), C5 (quarter), D5 (quarter), E5 (quarter), F5 (quarter), G5 (quarter).

Section A continuation with notes: G5 (quarter), A5 (quarter), B5 (quarter), C6 (quarter), D6 (quarter), E6 (quarter), F6 (quarter), G6 (quarter).

B

Section B consists of two measures of bass line with notes: G4 (quarter), A4 (quarter), B4 (quarter), C5 (quarter), D5 (quarter), E5 (quarter), F5 (quarter), G5 (quarter).

Section B continuation with notes: G5 (quarter), A5 (quarter), B5 (quarter), C6 (quarter), D6 (quarter), E6 (quarter), F6 (quarter), G6 (quarter).

DC al fine  
(with Repeats)

C

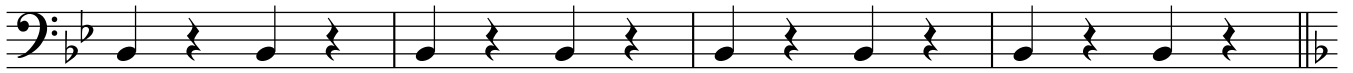
Section C consists of two measures of bass line with notes: G4 (quarter), A4 (quarter), B4 (quarter), C5 (quarter), D5 (quarter), E5 (quarter), F5 (quarter), G5 (quarter).

sim

Section C continuation with notes: G5 (quarter), A5 (quarter), B5 (quarter), C6 (quarter), D6 (quarter), E6 (quarter), F6 (quarter), G6 (quarter).

D

Section D consists of two measures of bass line with notes: G4 (quarter), A4 (quarter), B4 (quarter), C5 (quarter), D5 (quarter), E5 (quarter), F5 (quarter), G5 (quarter).

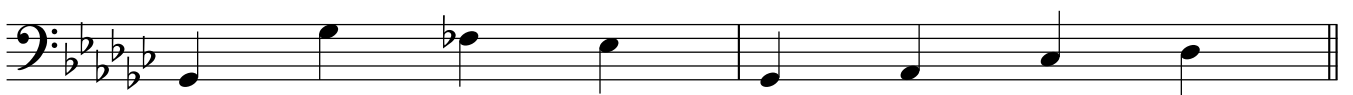


**E** ♩ = 133  
Vocal Break

7

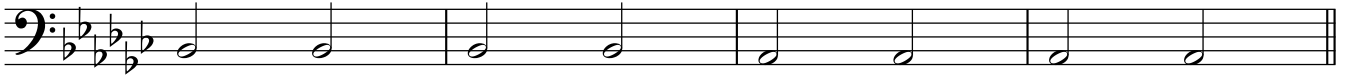
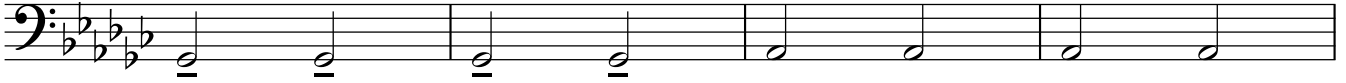


**F** ♩ = 154



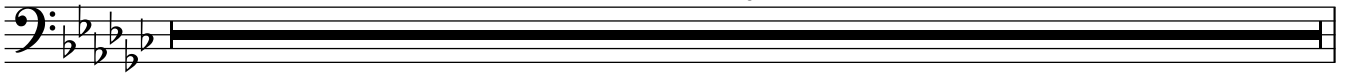
G

sim



H

2



(Begins to fade...)