

LET THERE BE LOVE

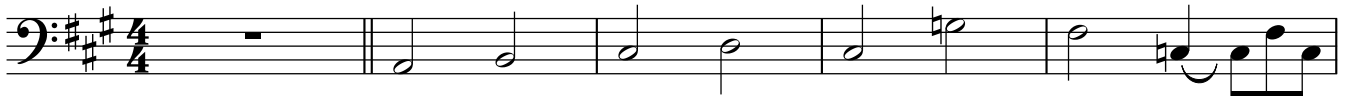


Artist: Nat 'King' Cole
Bassist: Al McKibbon

♩ = 121 (♩ = $\overset{\frown}{\underset{\frown}{\text{J}}}$)

A

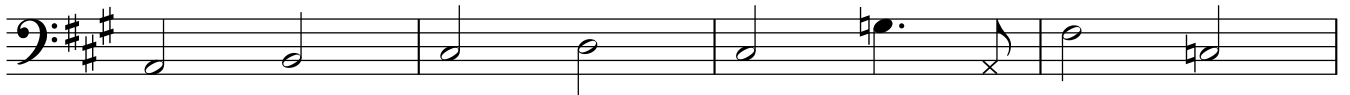
A Bm⁷ C[#]m⁷ D A/C[#] G⁷ F[#]7 F[#]m⁷(b5)/C



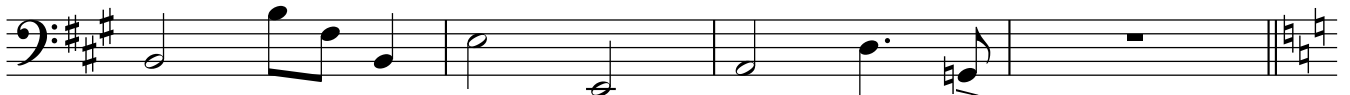
Bm⁷ E¹¹ E⁷([#]9) A F[#]7(b5) Bm⁷(b5) E+⁷



A Bm⁷ C[#]m⁷ D A/C[#] G¹³ F[#]7 C⁷



Bm⁷ E⁷([#]9) A Dm⁷ G¹³



B

C Dm⁷ Em⁷ Dm⁷ C C⁹/E A⁷



Dm⁷ G¹¹ G⁷ C⁶ C/E F G¹¹



C⁶ Dm⁷ Em⁷ F⁶ Em⁷(b5) A⁷



Dm⁷ G¹¹ C



C

C⁶ Dm⁷ Em⁷ F⁶ Em⁷(b5) A⁷



Dm⁷ Dm⁷(b5) G¹¹ G⁷/D^b C⁶ F C G¹¹





2

C⁶ Dm⁷ Em⁷ A⁹ A⁷

A bass line in 4/4 time, starting on a C⁶ chord. The notes are: C2, D2, E2, F2 (quarter); G2, A2, B2, C3 (quarter); D3, E3, F3, G3 (quarter); A3, B3, C4, D4 (quarter); E4, F4, G4, A4 (quarter); B4, C5, D5, E5 (quarter); F5, G5, A5, B5 (quarter); C6, B5, A5, G5 (quarter).

Dm⁷ G¹¹

A bass line in 4/4 time, starting on a Dm⁷ chord. The notes are: D2, E2, F2, G2 (quarter); A2, B2, C3, D3 (quarter); E3, F3, G3, A3 (quarter); B3, C4, D4, E4 (quarter); F4, G4, A4, B4 (quarter); C5, D5, E5, F5 (quarter); G5, A5, B5, C6 (quarter); D6, E6, F6, G6 (quarter).

F⁶ C F⁶ C

A bass line in 4/4 time, starting on an F⁶ chord. The notes are: F2, G2, A2, B2 (quarter); C3, D3, E3, F3 (quarter); G3, A3, B3, C4 (quarter); D4, E4, F4, G4 (quarter); A4, B4, C5, D5 (quarter); E5, F5, G5, A5 (quarter); B5, C6, D6, E6 (quarter); F6, G6, A6, B6 (quarter).

D

Db Ebm⁷ Db/F Gb Fm⁷ B⁷(b5) Bb⁷(b9)

A bass line in 4/4 time, starting on a Db chord. The notes are: Db2, Eb2, Fb2, Gb2 (quarter); Ab2, Bb2, Cb3, Db3 (quarter); Eb3, Fb3, Gb3, Ab3 (quarter); Bb3, Cb4, Db4, Eb4 (quarter); Fb4, Gb4, Ab4, Bb4 (quarter); Cb5, Db5, Eb5, Fb5 (quarter); Gb5, Ab5, Bb5, Cb6 (quarter); Db6, Eb6, Fb6, Gb6 (quarter).

Ebm⁷ Ab¹¹ Db Bb⁷ Ebm⁷ Ab¹¹

A bass line in 4/4 time, starting on an Ebm⁷ chord. The notes are: Eb2, Fb2, Gb2, Ab2 (quarter); Bb2, Cb3, Db3, Eb3 (quarter); Fb3, Gb3, Ab3, Bb3 (quarter); Cb4, Db4, Eb4, Fb4 (quarter); Gb4, Ab4, Bb4, Cb5 (quarter); Db5, Eb5, Fb5, Gb5 (quarter); Ab5, Bb5, Cb6, Db6 (quarter); Eb6, Fb6, Gb6, Ab6 (quarter).

Db⁶ Ebm¹¹ Fm⁷ Gbmaj⁹ Fm⁷ Bb⁷

A bass line in 4/4 time, starting on a Db⁶ chord. The notes are: Db2, Eb2, Fb2, Gb2 (quarter); Ab2, Bb2, Cb3, Db3 (quarter); Eb3, Fb3, Gb3, Ab3 (quarter); Bb3, Cb4, Db4, Eb4 (quarter); Fb4, Gb4, Ab4, Bb4 (quarter); Cb5, Db5, Eb5, Fb5 (quarter); Gb5, Ab5, Bb5, Cb6 (quarter); Db6, Eb6, Fb6, Gb6 (quarter).

Ebm⁷ Gb⁶ Db

A bass line in 4/4 time, starting on an Ebm⁷ chord. The notes are: Eb2, Fb2, Gb2, Ab2 (quarter); Bb2, Cb3, Db3, Eb3 (quarter); Fb3, Gb3, Ab3, Bb3 (quarter); Cb4, Db4, Eb4, Fb4 (quarter); Gb4, Ab4, Bb4, Cb5 (quarter); Db5, Eb5, Fb5, Gb5 (quarter); Ab5, Bb5, Cb6, Db6 (quarter); Eb6, Fb6, Gb6, Ab6 (quarter).

Gb⁶ Db Gb⁶ Db

A bass line in 4/4 time, starting on a Gb⁶ chord. The notes are: Gb2, Ab2, Bb2, Cb3 (quarter); Db3, Eb3, Fb3, Gb3 (quarter); Ab3, Bb3, Cb4, Db4 (quarter); Eb4, Fb4, Gb4, Ab4 (quarter); Bb4, Cb5, Db5, Eb5 (quarter); Fb5, Gb5, Ab5, Bb5 (quarter); Cb6, Db6, Eb6, Fb6 (quarter); Gb6, Ab6, Bb6, Cb7 (quarter).

Gb⁶ Db

A bass line in 4/4 time, starting on a Gb⁶ chord. The notes are: Gb2, Ab2, Bb2, Cb3 (quarter); Db3, Eb3, Fb3, Gb3 (quarter); Ab3, Bb3, Cb4, Db4 (quarter); Eb4, Fb4, Gb4, Ab4 (quarter); Bb4, Cb5, Db5, Eb5 (quarter); Fb5, Gb5, Ab5, Bb5 (quarter); Cb6, Db6, Eb6, Fb6 (quarter); Gb6, Ab6, Bb6, Cb7 (quarter).